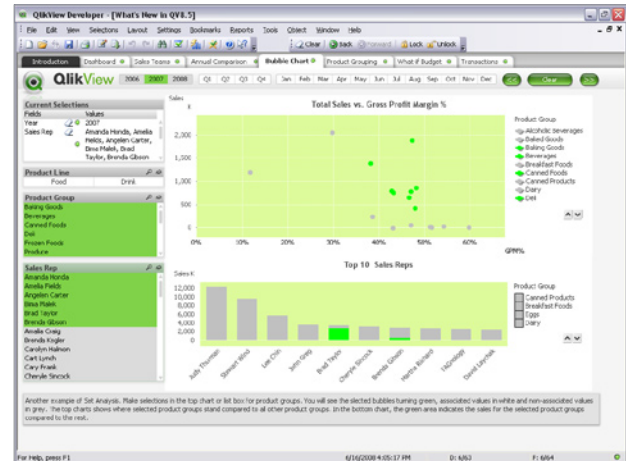


What's New in QlikView 8.50?

Chart features

Set Analysis

This is arguably the most important new feature of this release. QlikView has always been good at calculating aggregates for the current selection of data. However, when you wanted to compare results for different selections in the same chart, you needed to either prepare data in the script or resort to rather complicated expressions with if clauses. Set analysis changes all that, by making it possible to modify any aggregation function with an arbitrary selection set. The set may be defined as a bookmark, as an on-the-fly selection in one or more fields, as a function of current selections, the inverse of current selections, previous selections or as all data. The possibilities are endless and yet the syntax is fairly simple and straightforward. *Read more on page 327 in Book III of the QlikView Reference Manual.*



Set Analysis

New formatting styles

Pie charts, bar charts and gauge charts have been given new formatting styles providing a visible upgrade in graphics.

New plot area background style

The shadowed plot area background previously found in certain bar charts is now available for all bitmap charts with plot area background.

Numbers in bar segments

In bar charts there is now an option to have numbers plotted inside the bar segments rather than on top of them.

New mode for dimensionless bar charts

In dimensionless bar charts, it is now possible to have the expression labels plotted on the x-axis instead of in a separate legend.

Symbol plot options

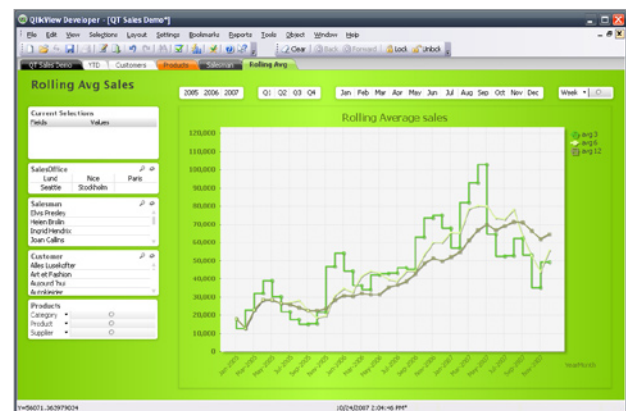
This option makes it possible to select a specific plot symbol for a given expression. *Read more on page 36 in Book III of the QlikView Reference Manual.*

Plateau line mode

This new plot option for line charts draws horizontal lines between data points and vertical lines at the points. *Read more on page 36 in Book III of the QlikView Reference Manual.*

Select others in block chart

It is now possible to select the Others segment in a block chart by clicking on it.



Plateau Line Mode

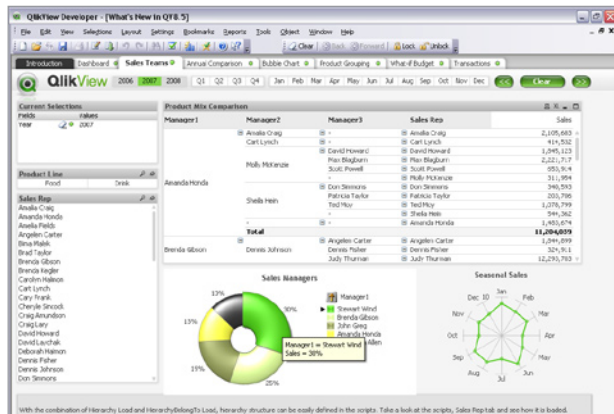
Layout features

Improved bookmarks

Bookmarks containing layout information now cover much more of the relevant layout state. Cycle group status and pivot table expand/collapse information will be remembered and re-applied when recalling the bookmark. There is also an option to include scroll positions in tables and charts with x-axis scroll. The scroll position will be re-applied on a best effort basis. Finally, it is now possible to make a pure layout bookmark, excluding the selection state altogether. *Read more on page 167 in Book I of the QlikView Reference Manual.*

Preservation of scroll positions after selection

QlikView now has the option to preserve scroll positions in tables and charts with x-axis scroll over a selection. The post-selection scroll positions are applied on a best effort basis.



Hierarchy Resolution

Sheet object drag and drop to Microsoft Office

Sheet objects in QlikView can now be dragged and dropped straight into Microsoft Word, Excel and PowerPoint documents. This feature works for local and server QlikView documents and from installed QlikView and QlikView IE plug-in alike.

Styling mode

A new sheet object caption/border style adds a whole new look to the QlikView sheet. Sheet objects are drawn with a background shadow, providing a cleaner and more modern look. *Read more on page 20 in Book II of the QlikView Reference Manual.*

Upgraded multi box

The multi box has been given an alternative cleaner formatting style. The traditional style has also received an upgrade. The multi box can now also display calculated fields. *Read more on page 135 in Book II of the QlikView Reference Manual.*

More formatting options in input box

More formatting options have been added to the input box. These include alignment settings and an option to omit the equal sign in the middle column. *Read more on page 179 in Book II of the QlikView Reference Manual.*

Calculated fields in slider/calendar objects

The slider/calendar object is now able to connect to calculated fields. *Read more on page 219 in Book I of the QlikView Reference Manual.*

Copy image as caption icon

The copy image command can now be configured as a caption icon.

More window sizes

The resize window command now has more screen resolutions to choose from, notably wide screen sizes.

New script and layout functions

Document info functions

Script macro functions accessing ActiveDocument are no longer permitted, as of QlikView 8.20. As there is sometimes information needed during script execution that was only available via macros containing ActiveDocument, we have added a set of standard QlikView functions to replace those macros. The new functions are NoOfTables, TableName, TableNumber, ReportName, NoOfReports, ReportId, ReportNumber and ReportComment. The table functions are only available from the script where as the report functions work both in the script and in the layout.

Day number functions

The functions DayNumberOfYear and DayNumberOfQuarter have been introduced. They return the day number within the year and the quarter, respectively.

General features

Improved performance and memory utilization

QlikView and QlikView Server have been further optimized for better performance and better memory utilization in multi-user environments.

Password for module

It is now possible to protect the macro module with a password. *Read more on page 45 in Book II of the QlikView Reference Manual.*

Initial selection based on section access

This new feature allows you to apply an initial selection based on section access when a document is opened. It works basically just like the old initial data reduction, but without applying the reduction.

On-the-fly variables

When using \$0 macro expansion in QlikView expressions, you may now skip the extra step of creating a variable for the expansion. If the string between the brackets starts with an equal sign, the following content will be expanded as if it were contained in a variable. *Read more on page 360 in Book I of the QlikView Reference Manual.*

Command line switch -nodata

A new command line switch, -nodata has been added, making it possible to open QlikView documents without their data. This may be handy, e.g. when opening a very large document on a developer computer with too little RAM to accommodate all data. *Read more on page 67 in Book I of the QlikView Reference Manual.*

Scripting interface to DMS

Syntax has been added for scripted access to QVSDMS.

Script features

Hierarchy resolution

The new script keywords Hierarchy and HierarchyBelongs-To drastically simplify the creation of scripts reading hierarchical data. *Read more on page 309 and page 310 in Book I of the QlikView Reference Manual.*

Read pictures from ODBC databases

Support has been added to read images stored in ODBC databases. *Read more on page 312 in Book I of the QlikView Reference Manual.*

Image size transformation

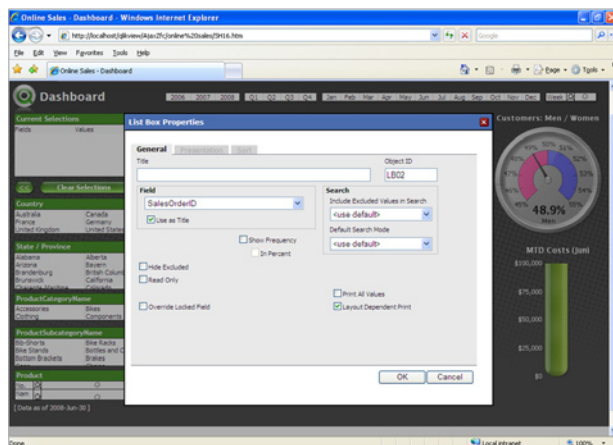
When reading images for inclusion in the QlikView document, script syntax has been added for resizing of the images. This makes it possible to do such things as read thumbnail images via the bundle syntax. *Read more on page 312 in Book I of the QlikView Reference Manual.*

More keyboard shortcuts in script editor

A number of new keyboard shortcuts have been added throughout the script editor.

AJAX client capabilities

Collaboration Object Creation from AJAX Client Server settings permitting, it is now possible to create user charts and list boxes from the AJAX clients. This is the first step towards the goal of providing full collaboration object support in this environment.



User Object Creation from QlikView Analyzer

Anonymous user bookmarks

Previously only authenticated users could create bookmarks via the AJAX client. With this release that capability is extended to all users, authenticated or anonymous.

Context menus

Right-click context menus have been added to the AJAX client. More or less all options found in the thicker client are now also available to the AJAX user.

Toolbar

It is now possible to add a toolbar with the most common commands to the AJAX client application. The option to include the toolbar is available in the Client Page Generator dialog.

Upgraded sheet object drawing

Major improvements have been made in the visual presentation of tables and current selection boxes. Support has been added for displaying bitmap buttons and aqua style buttons.

Upgraded sheet tabs

The drawing of sheet tabs has been improved. Support for selection beacons has been added.

Support for input fields

Input fields can now be edited via the AJAX client.

Full support for fast type change in charts

Fast type change now also works between bitmap charts and table charts.

Expression search

Support has been added for search in straight table expression columns.

Frequency in list boxes

Support has been added for the frequency column in list boxes.

Export to CSV

Export to csv has been added as an option for selected objects via their context menus.

Java client capabilities

JavaBeans integration

The Java client now consists of JavaBeans, which can be used for server side and/or client side integration with other Java applications.

Stand-alone capabilities

The Java client can now be run as a stand-alone application

outside the browser environment. For this to be useful, an open in server dialog has been added, so that the client can connect to a QlikView Server and open documents. Furthermore, the client and QlikView Server 8.5 and later will have cross version compatibility just as the QlikView IE plug-in and the installed QlikView clients.

Graphical updates

A number of improvements have been made in the graphical presentation of the Java client, so that it now supports most features found in the thick clients. Features include an improved tab row, support for the new caption/border style and support for rounded corners on sheet objects.

Improved tables

Tables in the Java client now support pivoting and moving of columns. Additionally, support has been added for displaying gauges in table cells.

Improved export option

Support for export to csv and copy to clipboard has been added.

Open files from info button

It is now possible to open files by means of an info button.

QlikView OCX features

Registration-free deployment of QlikView OCX

It is now possible to use the QlikView OCX component for integration with other applications without actually registering it on the target system. This makes it possible to deploy several different host applications using different versions of the QlikView OCX component on the same computer.

On reload failed event

This new event makes it possible to catch failed script execution from a host application.

Simplified licensing

QlikView Enterprise becomes QlikView Developer

QlikView Enterprise has been renamed QlikView Developer in order to better reflect its intended use and target audience. Functionally, it delivers the same capabilities.

Same price for 32- and 64-bit

The product distinction between 32- and 64-bit QlikView and QlikView Server has been removed. All QlikView users now have the choice to use the full power of 64-bit QlikView.

User object creation from QlikView Analyzer

The previous requirement for a QlikView Professional or QlikView Enterprise license key in order to create personal and shared sheet objects in a QlikView Server document has been removed. If you have a valid CAL and are an authenticated user, you may create and share your own sheet objects (server settings permitting).

Other QlikView Publisher related features

SNMP Support

Allows for monitoring of the Publisher through Simple Network Monitoring Protocol (SNMP). Properties that can be monitored include for example, current work for the Execution Service.

Publisher history & preview in a QVW format

This feature allows for creation of a QlikView file containing information about the distributions made by QlikView Publisher. It is possible to track which source documents become which distributed documents and who has access to them.

GUI review

The GUI in QlikView Publisher 8.50 has been reviewed and improved in many places. Among some of the changes are the Create / Edit page of tasks and jobs which is now a separate page not embedded in the list of all tasks and jobs. This will make the usage easier and also faster.

Command line statement for Execution Service – Reload

This feature allows for reloading a QlikView file with QlikView Publisher without having to create a task and job for doing so. It will send the instructions to the Execution Service to reload a specific file.

Tighter integration with QVS

1. *Final DMS support features added.* It is now possible to set the Autoload functionality of a QVS in DMS mode from inside QlikView Publisher.
2. *QVS broadcast.* The QVS is now broadcasting its presence on the network to allow for easier detection.

More EDX functions exposed

The Event Driven Execution (EDX) functions have been improved to allow for more feedback to the process starting it. It is now possible to follow up on how a specific job that was started by EDX is progressing and how it ends.